

The Woodside



1417 sq. ft. Two-Storey

The **WOODSIDE** is a 3 bedroom, 2 1/2 bath home designed for lots with a rear lane. Great Room design with gas fireplace. Spacious kitchen with island. Large eating area. Grand master bedroom with ensuite bath and walk-in closet. Comes with or without a garage. A&S quality and much more... **Contact me for pricing!**

Ken Smith 

“Performance, Accountability, Results”

(204) 987-2100

www.kensmithcentury21.com

Century 21
Carrie.com

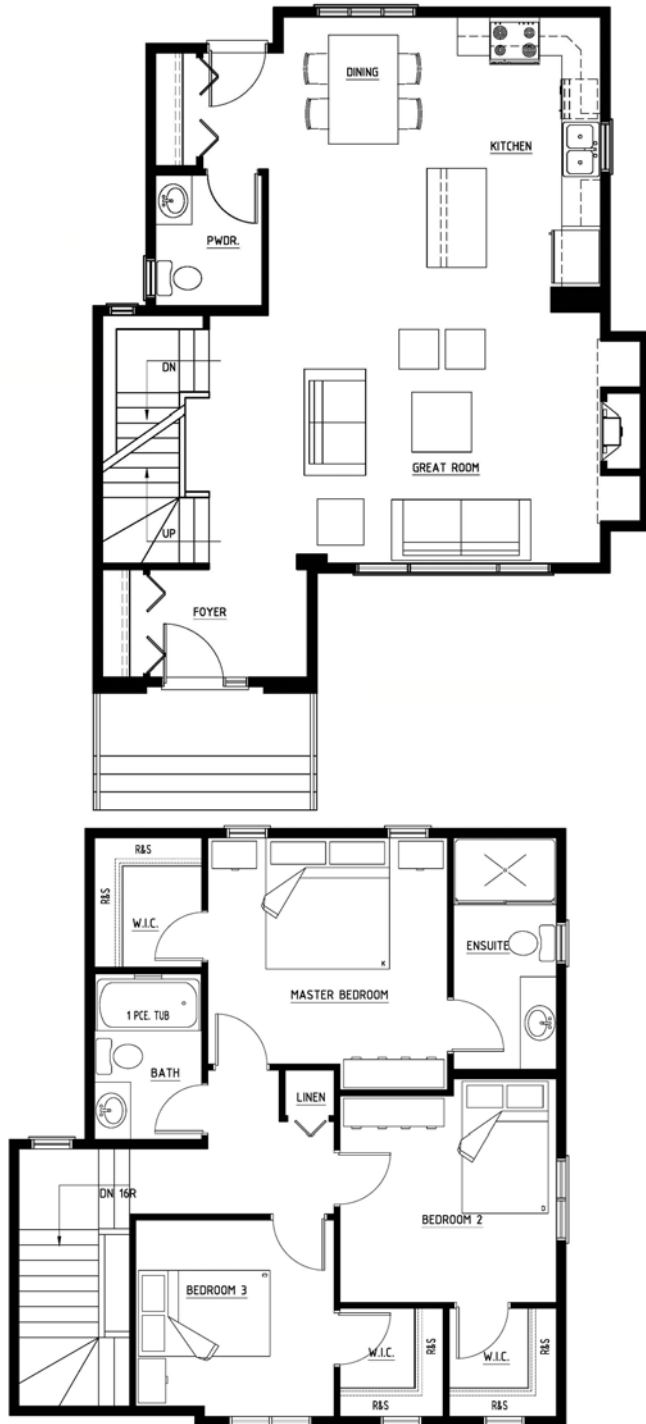
 **A&S**
HOMES

* Prices and Features May Vary and Are Subject To Change Without Notice

* All Illustrations Are The Artist's Conception

* Please Ask Your Sales Representative For Details

The Woodside



FEATURES

1,417 sq. ft. Two-storey

26 ft. wide

3 Bedrooms

2 1/2 Baths

Great Room with gas fireplace & ceramic tile surround

Spacious kitchen w/island & large eating area

Master Bedroom with 4 piece ensuite and walk-in closet

Designed for Lots with a Rear Lane

Comes with or without a Garage



For more information please contact **KEN SMITH** at
(204) 987-2100



* Prices and Features May Vary and Are Subject To Change Without Notice
* All Illustrations Are The Artist's Conception
* Please Ask Your Sales Representative For Details

