

The Melbourne



1224 sq. ft. Bungalow

The **MELBOURNE** is a 3 bedroom, 2 bath design. Living room/dining room combination. Large eat-in kitchen with island and pantry. Master bedroom with ensuite bath and walk-in closet. Main floor laundry. Double attached garage with overhead insulated door. A&S quality and much more... **Contact me for pricing!**

Ken Smith 

“Performance, Accountability, Results”

(204) 987-2100

www.kensmithcentury21.com

Century 21
Carrie.com

 **A&S**
HOMES

* Prices and Features May Vary and Are Subject To Change Without Notice

* All Illustrations Are The Artist's Conception

* Please Ask Your Sales Representative For Details

The Melbourne

FEATURES

1,224 sq. ft. Bungalow

32 ft. wide

3 Bedrooms

2 Full Baths

Living Room / Dining room
combination

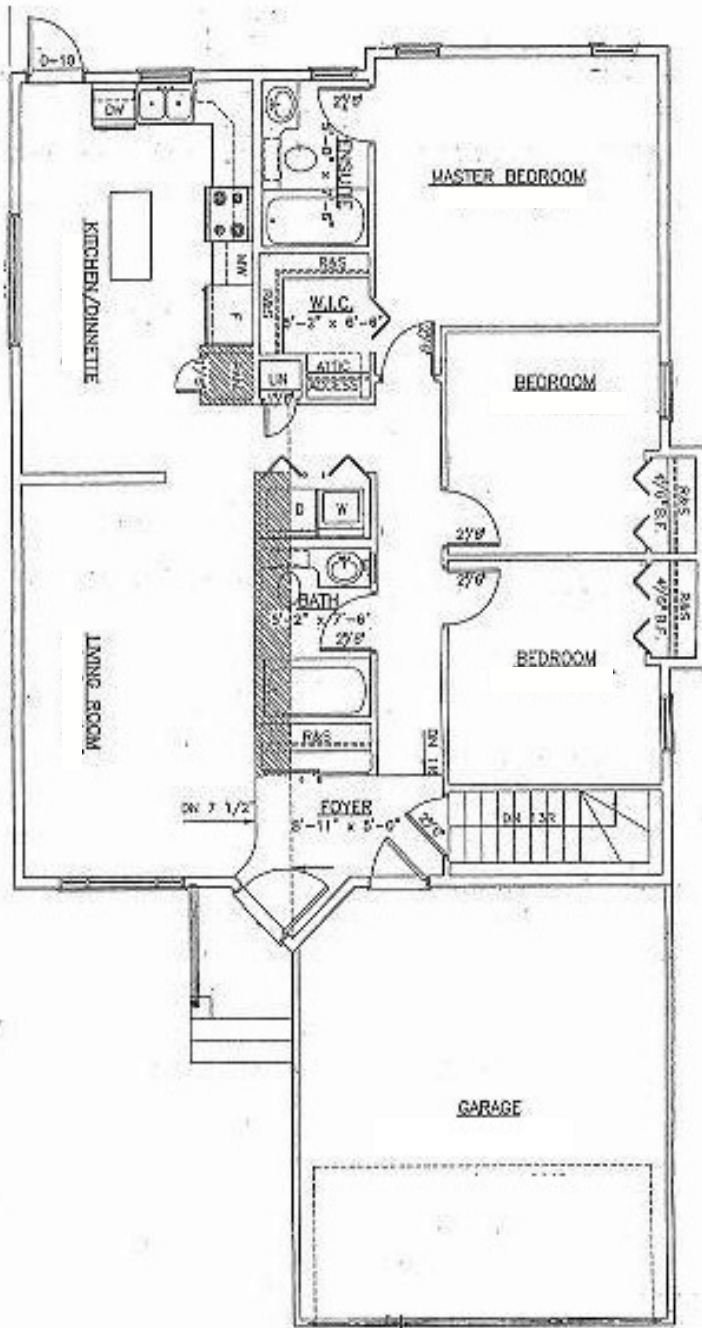
Spacious eat-in kitchen with
walk-in pantry and island

Master Bedroom with 4 piece
ensuite and walk-in closet

Main floor laundry

Huge open basement ready
to develop

Double attached garage with
paved driveway & sidewalk



For more information please contact **KEN SMITH** at
(204) 987-2100



* Prices and Features May Vary and Are Subject To Change Without Notice

* All Illustrations Are The Artist's Conception

* Please Ask Your Sales Representative For Details

