

The Courtney II



1681 sq. ft. Cab-over

The **COURTNEY II** is a 3 bedroom, 2 bath design. Great room with gas fireplace. Formal dining room. Spacious island kitchen with corner pantry and large dinette. Vaulted ceilings. Grand master bedroom with full ensuite bath and walk-in closet. 21 x 22 double attached garage. A&S quality and much more... **Contact me for pricing!**

Ken Smith 

“Performance, Accountability, Results”

(204) 987-2100

www.kensmithcentury21.com

Century 21
Carrie.com

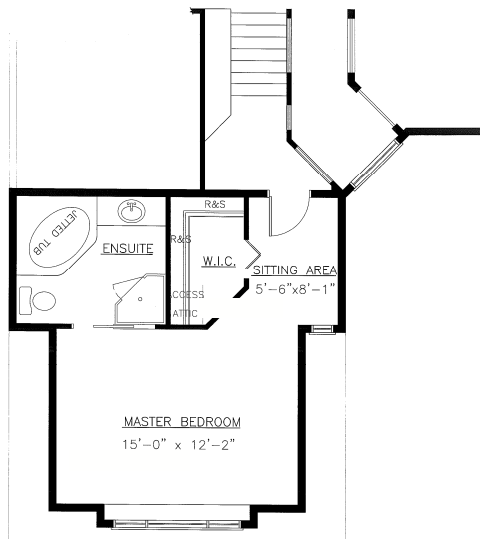
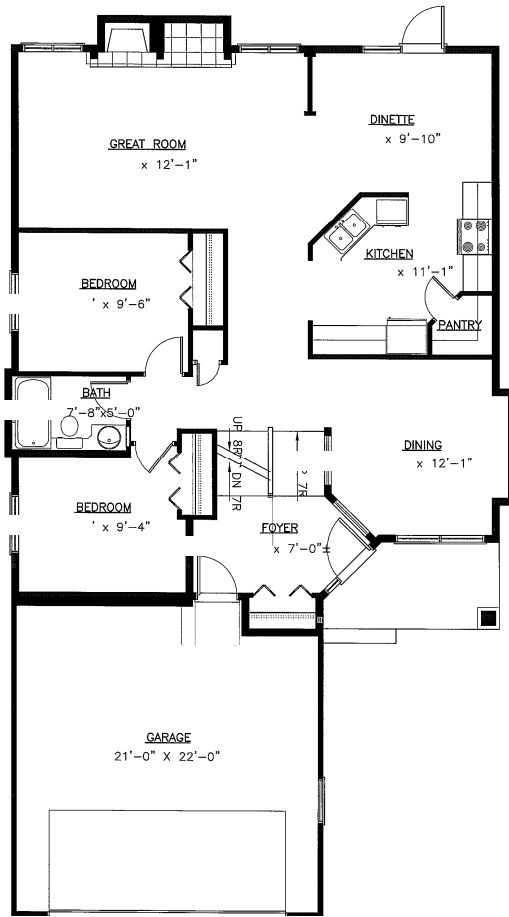
 **A&S**
HOMES

* Prices and Features May Vary and Are Subject To Change Without Notice

* All Illustrations Are The Artist's Conception

* Please Ask Your Sales Representative For Details

The Courtney II



FEATURES

1,681 sq. ft. Cab-over

33 ft. wide

3 Bedrooms

Formal Dining Room

2 Full Baths

Great Room with gas fireplace
& ceramic tile surround

Spacious eat-in kitchen with
walk-in pantry and island

Master Bedroom with 4 piece
ensuite and walk-in closet

Huge open basement ready
to develop

Double attached garage with
paved driveway & sidewalk



For more information please contact **KEN SMITH** at
(204) 987-2100



* Prices and Features May Vary and Are Subject To Change Without Notice

* All Illustrations Are The Artist's Conception

* Please Ask Your Sales Representative For Details

