

# The Torrington



## 1646 sq. ft. Two-Storey

The **TORRINGTON** is a 3 bedroom, 2 1/2 bath design. Great Room with gas fireplace. Spacious island kitchen with corner pantry. Dinette with bay window. Grand master bedroom with ensuite bath and walk-in closet. 2nd floor laundry. 20 x 22 double attached garage. A&S quality and much more... **Contact me for pricing!**

**Ken Smith** 

*“Performance, Accountability, Results”*

(204) 987-2100

[www.kensmithcentury21.com](http://www.kensmithcentury21.com)

**Century 21**  
Carrie.com

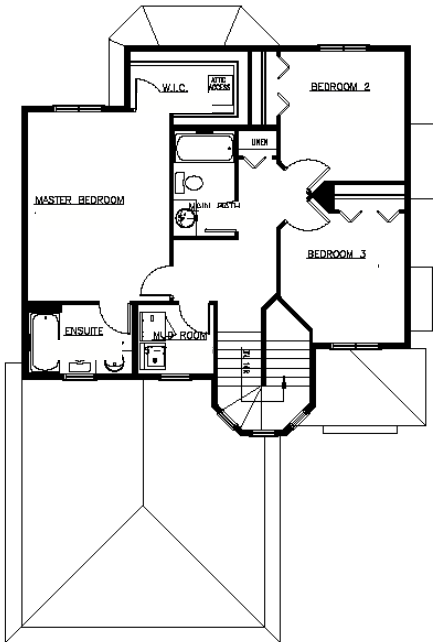
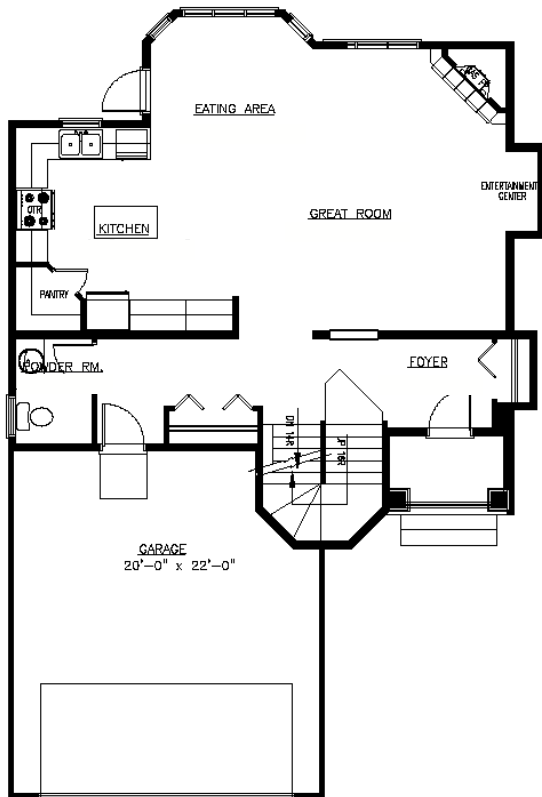
 **A&S**  
HOMES

\* Prices and Features May Vary and Are Subject To Change Without Notice

\* All Illustrations Are The Artist's Conception

\* Please Ask Your Sales Representative For Details

# The Torrington



## FEATURES

1,646 sq. ft. Two-storey

32 ft. wide

3 Bedrooms

2 1/2 Baths

Great Room with gas fireplace  
& ceramic tile surround

Spacious kitchen with  
walk-in pantry and island

Family size dining area

Master Bedroom with 4 piece  
ensuite and walk-in closet

Second floor laundry

Double attached garage with  
paved driveway & sidewalk



For more information please contact **KEN SMITH** at  
**(204) 987-2100**



\* Prices and Features May Vary and Are Subject To Change Without Notice  
\* All Illustrations Are The Artist's Conception  
\* Please Ask Your Sales Representative For Details

